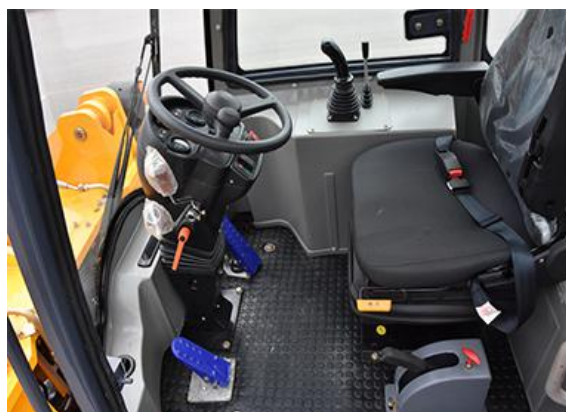


SHANDONG HAITUI HEAVY INDUSTRY MACHINERY CO., LTD

Contact:Terry Email:terry@haituichina.com Phone/Whatsapp:+86-15263772910

ZL918E 1.5ton Wheel Loader

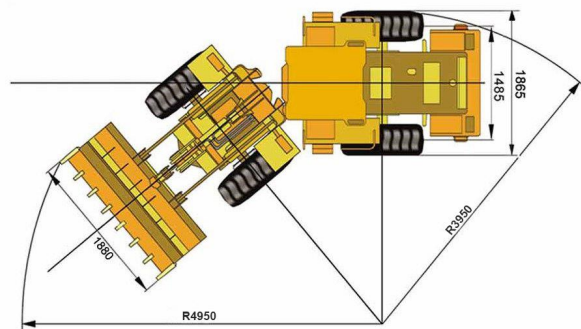
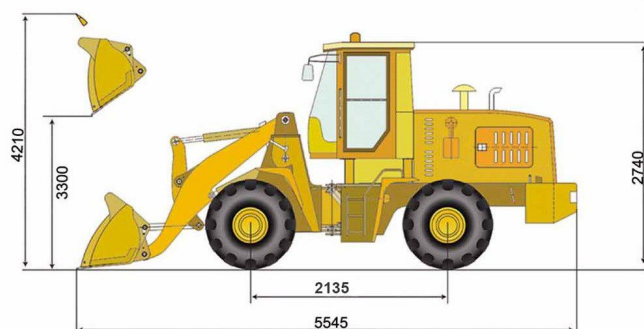


SHANDONG HAITUI HEAVY INDUSTRY MACHINERY CO., LTD

Contact:Terry

Email:terry@haituichina.com

Phone/Whatsapp:+86-15263772910



Main Specifications of ZL918E Wheel Loader

ITEM	ZL918E
Operating Weight (kg)	4050
Dimension L×W×H (mm)	5545×1880×2740 mm
Loading Capacity (kg)	1500
Bucket Capacity (m ³)	0.65
Tires	20.5/70-16
Engine	YunNei
Rated Power (KW)	42
Max Torque (N.m)	195
Max Speed (Km/h)	25
Wheel Base (mm)	2305
Max. Traction Force (KN)	49
Max. Breakout Force (KN)	48
Max Lifting Height (mm)	4210
Max Dumping Height (mm)	3300
Min Turning Radius (mm)	4950
Transmission	Hydraulic Torque Convertor
Gear Shift	F2+R2
Axle	Hub Reduction Axle
Brake System	Air over hydraulic oil brake on 4 wheels